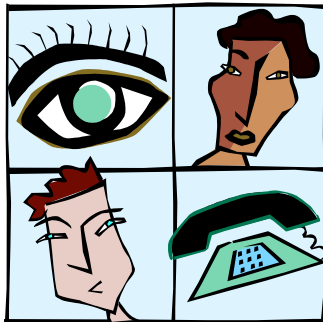


FAIRFIELD HEALTH SERVICE

Telephone Directory

Incorporating:

**Community Health,
Hospitals, Area Services, STARTTS and Area Purchasing**



**Fairfield Hospital
Cnr Polding Street and Prairievale Road
PRAIRIEWOOD NSW 2176**

**Tel: [02] 9616-8111
Fax: [02] 9616-8240**

Website:



*Many thanks to all who contributed the information which allowed this directory to be compiled.
Any errors or omissions are unintentional and any corrections or additions can be either telephoned or e-mailed to:*

**Susy Spini
I.T. Services Manager
Fairfield Health Service**

Revised: January 2005



FAIRFIELD HEALTH SERVICE TELEPHONE DIRECTORY



FAIRFIELD HOSPITAL

Delivery Address:
 Fairfield Health Service
 Cnr Polding St & Prairievale Rd
 PRAIRIEWOOD NSW 2176

Mailing Address:
 Fairfield Health Service
 P.O. Box 5
 FAIRFIELD NSW 1860

Telephone: 9616-8111

Facsimile: 9616-8240

EMERGENCY: 666 [Fairfield Hospital, Prairiewood Community Health Centre, Corella]
SECURITY: **Pagers:** 47884 / 47885 **Telephone Extension:** 68149
SECURITY: **Pager:** 47886 (Mon-Fri between 18:00-02:30hrs / Sat-Sun between 14:00-06:00hrs)
SWITCHBOARD: 9
OUTSIDE LINE: 0
GROUP PICKUP: Dial 55

FAX NUMBERS-FAIRFIELD HOSPITAL

Location	Fax No.
Administration (Main Fax)	9616-8240
Ambulatory Care Fax	9616-8305
Antenatal Clinic	9616-8521
Bookings & Pre-Admission Clinic	9616-8114
Business Managers' Unit	9616-8856
Childcare Centre	9616-8552
Clinical Information	9616-8281
Community Paediatrics	9616-8030
Corella Drug Treatment Service	9616-8803
Dental Clinic (Adult Dental)	9616-8565
Dental Clinic (Child Dental)	9616-8007
Diabetes	9616-8026
Emergency Department	9616-8274
Employee Services Department	9616-8021
Food Services	9616-8835
ICU	9616-8553
General Practice Unit	9616-8400
Library	9616-8403
Maternity	9616-8851
Nursing Administration	9616-8855
Operating Theatre	9616-8539
Pathology	9616-8293
Pharmacy	9616-8528
Prairiewood Physical Disability Team	9616-8033
Physiotherapy	9616-8537
Social Work	9616-8850
Stores	9616-8359
Ward 1A – Medical	9616-8551
Ward 2A – Surgical	9616-8552
Ward 2B – Orthopaedics	9616-8556



Paging:

Dial 77 Pager No * Ext. Number **



Voicemail:

Dial 68555

COMMUNITY HEALTH CENTRES

Centre	Telephone	Fax	Emergency Tel. No.
Aged Care Services	9754-1188	9754-1803	666
Cabramatta Community Health Centre – CCHC	8717-4000	8717-4030	4001 or 0,000
Early Childhood & Parenting Service – ECAPS	9794-1760	9794-1755	666
Fairfield Community Health Centre – FCHC	9794-1700	9794-1777	666
Fairfield Liverpool Youth Health Team – FLYHT	8717-1717	8717-1710	666
Prairiewood Community Health Centre – PCHC	9616-8169 or 9616-8170	9616-8171	666 (F/Hospital Site)



EMERGENCY TELEPHONE NUMBERS

Fairfield Hospital Site:

Antenatal Clinic
Child Care Centre
Dental Clinics – Adult and Child
Prairiewood Community Health Centre

Dial: 666

Corella Drug Treatment Service and Pathways:

DIAL: 666 (For Fire and Security Emergency Services)

DIAL: 0 then 000 (For Medical Emergency Services)

Fairfield Community Health Centre:

Dial: 666 (To Contact Centre Reception)

Cabramatta Community Health Centre:

Dial: 4001 (To Contact Centre Reception)

Aimees Place – Aged Care Service:

DIAL: 000 (To Contact Emergency Services)

*Speak to your Service Manager or Centre Administrator
for information on Emergency Procedures.*

A

Admission and Discharge Planning

Name	Title	Ext. No.	Pager/Mobile
Rosemary McIndoe	Patient Flow Manager	68127	47797
Chris Williams	NUM – Preadmission Clinic	68183/68184	
Sandra Pettitt	Discharge Planner	68288	47531
Christine Tabram	Bookings Clerk	68104/68106	
Sue Van Kalker	Pre-Admission Clerk	68183/68184	
Dr. Bhagi Jethvani	Medical Officer – Pre-Admission Clinic	68504	
Fax	Administration Fax	9616-8240	

After Hours Nurse Managers

Belinda Pellizzon	After Hours Nurse Manager	68404	47772
Beverley Little	After Hours Nurse Manager	68404	
Craig Lawson	After Hours Nurse Manager	68404	47772
Ofelia Lagon	After Hours Nurse Manager	68404	47772
Rosemary Skybinski	After Hours Nurse Manager	68404	47772
Fax	Nursing Administration Fax	9616-8855	

Ambulatory Care

Lyn Cohen	Nurse Unit Manager – Ambulatory Care	68829	0438-675-851
Dr. Tai-Tak Wan	Medical Director – Ambulatory Care	68341	
Leeanne Cooke	Ambulatory Care Receptionist/Medical Director's Secretary	68340	
Louise Broudou	C&CC – Respiratory Liaison Nurse	68832	0419-496-986
Intake-Cabramatta	Intake-Cabramatta Community Health Centre	8717 4009	
Wayne Phillips	Clinical Nurse Consultant – Community Paediatrics	68315	47877
Tony Hecimovic	Clinical Nurse Consultant – Community Acute Care	68437	0438 733 884
Jenni Wilson	Social Worker	68557	47901
Sheila Skinner	Physiotherapist	68557	
Josephine Mortimer	Occupational Therapist	68848	
Fax	Ambulatory Care Fax	9616-8305	

Antenatal Clinic

Terri Bell	Nursing Unit Manager (ANC)	68515	
Maternity Bookings Clerk	Maternity Bookings Clerk	68509	
Ward Clerk	Reception	68506/68507	
Ana Seput	GP Shared Care Midwife	68508	
VMO Room	Room 1	68518	
Midwives Clinic	Room 6	68513	
Fax	Antenatal Fax	9616-8521	

Arts for Health Program

Martha Fernandez	Arts for Health Worker	68444	
Fax	Administration Fax	9616-8240	

B

Braeside Hospital

Main Reception	Main Reception	68600	
Thelma Thoms	General Manager – Braeside	68600	
John Lach	Finance Manager – Braeside	68665	
Cecille Llave	Finance Officer Admin.	68651	
Fax	Braeside Administration Fax	9616-8605	

C

Cardiac Assessment, Recovery and Education (CARE)

Robyn Speerin	Nurse Practitioner – Cardiac Nursing	68344	47559
Julie Lagudi	Secretary – C.A.R.E.	68153	
Jane Gibson	Cardiac Rehabilitation Nurse	68153	47879
Stress Test Room	Stress Test Room	68433	
Linda Gardiner	C&CC – Heart Failure Specialist Liaison Nurse	68842	47785 0408-665-484
Lai Hong Siew	C&CC – Hypertension Clinic – Speciality Liaison Nurse	68831	
Fax	Administration Fax	9616-8240	

C

Cashier

Name	Title	Ext. No.	Pager/Mobile
Alayna Hoang	Cashier	68231	
Fax	Administration Fax	9616-8240	

Central Sterilisation Department – CSD

Tracey Worthington	CSD Manager	68161	
CSSD Main Phone	CSSD Main Phone	68162	
Fax	Administration Fax	9616-8240	

Childcare Centre

Carmen Putica	Director – Childcare Centre	68545	
Administrative Assistant	A/Administrative Assistant	68545	
Play Room	Play Room	68168	
Staffroom	Childcare Staffroom	68166	
Sharon Hagerty	Vacation Care Co-ordinator	68545	0439 460 344
Fax	Childcare Fax	9616-8552	

Clinical Nurse Educators

Debra Raymond	CNE – Emergency	68024	47897
CNE Emergency	CNE – Emergency	68024	47897
Margaret Balzam	CNE – ICU	68042	47587
Blanka Blesko	A/CNE – Maternity	68834	47789
Susan Dietsch	CNE – Orthopaedics	68043	47878
Mandy Mayahi - Neysi	CNE – Ward 1A [Medical]	68045	47928
Kathy Mc Guire	CNE – Ward 2A [Surgical]	68044	
CNE Theatres	CNE – Theatres	68037	
CNE TBA	CNE – TBA	69157	
Fax	Administration Fax	9616-8240	

Clinical Information

Daniela Markovski	Clinical Information Manager	68277	
Kim Tran	A/Community Clinical Information Manager	68349	
Diana Markovski	PAS Clinical Information Manager	68282	47798
Chan Duong	Deputy Clinical Information Manager	68413	
Christine Buttsworth	Weekend/Research	68280	
Sopheha Seng	Enquiries Clerk	68278	
Dorothy Webb	Inpatient/Assembly Clerk	68527	
Toni Jackson	Emergency/Outpatient Clerk	68279	
Deep Kumar	Clinical Coder	68543	
Issraa Hamoud	Clinical Coder	68544	
Anney Trinh	Coding Support Officer	68243	
Doctors Room	Doctors Room	68546	
Main Bench	Main Bench	68349	
C.I. Primary Storage	PS	68283	
C.I. Secondary Storage	SS	68220	
Fax	Clinical Information Fax	9616-8281	

Community and Allied Health Administration

Dianna Kenrick	Director of Community & Allied Health	68105	0417-299-744
Eleanor Gaspi	A/Secretary – Director Of Community & Allied Health	68125	
Troy Trgetaric	Assistant Director – Community & Allied Health	68809	0419-492-318
Eve Bigelow	Senior Nurse Manager – Community & Allied Health	68215	0417-282-627
Fax	Administration Fax	9616-8240	

Community Palliative Care Service

Malcolm Stokes	Service Manager / NUM	68150	0439 484 503
Pauline Davis	Palliative Care Clinical Nurse Consultant	68173	0417-489-703
Christine Finlay	C&CC - Palliative Care Nurse	68169	0417-466-822
Primary Health Nurses	Palliative Care Primary Health Nurses	68175/68540	
Fax	Prairiewood Community Health Centre Fax	9616-8171	

C

Community Paediatrics

Dr. Suky Yim	A/Community Paediatrician	68257	47776
Sue Gascoigne	Secretary - Community Paediatrics	68237	
Dr. Nicholas Cheng	Staff Specialist – Paediatrics / Ambulatory Care	68029	47770
Registrar	Registrar - Community Paediatrics	68390	47550
Fax	Community Paediatrics Fax	9616-8030	

Community Participation Co-ordinator

Name	Title	Ext. No.	Pager/Mobile
Carmen Putica	Community Participation Co-ordinator	68116	
Fax	Administration Fax	9616-8240	

D

Dental Clinic - Adult

Main Reception	Main Reception-Adult Dental	68185	
Adult Dental-Staff Phone	Adult Dental-Staff Phone	68186	
Dr. Sadhna Kumar	Dentist-In-Charge	68229	
Dental Staffroom	Dental Staffroom	68579	
Fax	Adult Dental Fax	9616-8565	

Dental Clinic - Child

Main Reception	Main Reception – Child Dental	68000	
Vivienne Magro	Dental Service Manager	68006	0439-662-683
Conference Room	Child Dental Conference Room	68008	
Dental Therapists	Dental Therapists	68001-68005	
Fax	Child Dental Fax	9616-8007	

Diabetes and Nutrition Clinic

Nicole Matthews	Clinical Nurse Consultant – Diabetes Education	68532	47510
Debra Lebius	Receptionist	68510	
Jean Tan	Diabetes Educator	68531	47509
Kwun-Ying Chan	C&CC - Liaison Specialist Nurse	68886	0408-663-242
Nutrition Clinic Room	Nutrition Clinic Room	68163	
Fax	Antenatal Fax	9616-8521	

Dietetics

Sami Azad	Service Manager – Nutrition and Dietetics	68355	47513
Jose Cabello	Dietitian	68353	24002
Deborah Charles	Diet Supervisor	68354	
Seang Seng	Diet Supervisor	68354	
Dietary Assistants	Dietary Assistants	68352/68356	48011
Outpatient Clinic	Dietitians Outpatient Clinic	68163	
Fax	Administration Fax	9616-8240	

Dietetics II

Dean Mercurio	Dietitian	68236	24012
Raji Jayadev	Dietitian	68236	
Shirley Chan	Dietitian	68236	
Fax	Administration Fax	9616-8240	

Drug Health Services - Corella

Main Reception	Reception	68800	
Claire Honey	A/Manager – Fairfield Drug Services	68841	
Lucinda Scopelliti	Nurse Unit Manager	68810	
Adam Winstock	Doctor	68816	
Kirsty Young	Senior Admin Officer	68857	
Carolyn Farrugia	Secretary	68808	
Domenica Sindoni	Roster Support Officer	68813	
Lynette Whitehead	Receptionist	68801	
Linda Werbeloff	Psychologist	68854	
Fax	Fairfield Drug Treatment Services	9616 8803	

D

Drug Health Services (Continued)

Pathways

Name	Title	Ext. No.	Pager/Mobile
Marie Gauci	Receptionist/Admin	68888	
Centralised Intake	Centralised Intake	68877	
Claire Honey	Team Co-ordinator	68859	
Huy Nguyen	Counsellor	68879	
Greg Frost	Counsellor	68878	
Dajana Bjelosevis	Community Counsellor	68858	
Fax	Intake	9616 8870	
Fax	Pathways	9616 8880	

Harm Reduction Program (57 Anthony Street, Fairfield)

Annick Pothin	Receptionist/Admin	9724 9922	
Manager	Service Manager	9724 9922	0409 398 346
Fax	Intake	9725 6782	

E

E.C.G.

Renate Snowden	ECG Technician	68502	47817
Fax	Bookings and Pre-Admission Clinic	68114	

Emergency Department

Belinda Pellizon	A/Nursing Unit Manager – Emergency	68148	47692
Front Desk	Clerk	68132	
Rachel Jamieson	EDIS Clerk	68145	
Triage Nurse	Triage Nurse	68130	
George Abou-Hatoum	A/Director of Emergency	68134	47801
	Director of Emergency	68133	47540
Staff Station	Staff Station	68139	
Staff Station	Staff Station	68140	
Staff Station	Staff Station	68141	
Staff Tea Room	Staff Tea Room	68135	
Resuscitation Room	Resuscitation Room	68146	
MET Pager	MET Pager		47548
Fax	Emergency Department Fax	9616-8274	

Employee Services

Liz Bail	Employee Services Manager	68120	
Jennifer Newman	Employee Services Officer	68891	
Kim Silverstone	Employee Services Officer	68123	
	Administrative Assistant	68014	
Narelle Kuperman	Administrative Assistant	68020	
Margo Reid	OH&S Co-ordinator	68348	47892
Fax	Administration Fax	9616-8021	

Ethnic Obstetric Liaison Officers [E.O.L.O.'s]

EOLO Co-ordinator	Co-ordinator	86225	0417-206-245
Mai Duong / Vannak Ing	EOLO	68217	
Sue Diong / Nguyet Cao	EOLO	68276	
Fax	Bookings and Pre-Admission Clinic	68114	

F

Finance

Raymond Lal	A/Director of Finance and Administrative Services	68109	
Donna Perera	Finance/Revenue Manager	68124	
Mary Israel	A/Finance Officer	68536	
Marietta Tan	Patient Liaison Officer - Revenue	68233	47816
Susan Trinidad	Creditor's Clerk	68122	
	Administrative Officer	68068	
Fax	Administration Fax	9616-8240	

F

Food Services

Name	Title	Ext. No.	Pager/Mobile
Joan Keith	A/Food Services Manager	68155	47558
Helen Becker	Food Services Supervisor	68151	
Robert Campbell	Food Services Supervisor	68152	
Kitchen	Kitchen	68158	
Diet Kitchen	Diet Kitchen	68157	
Cafeteria	Cafeteria Servery	68159	
Dining Room	Dining Room (Near Hallway)	68160	
Dining Room	Dining Room (Near Courtyard)	68408	
Fax	Administration Fax	9616-8240	

Front Office Enquiries

Front Office Enquiries	Front Office Enquiries	68234	
Relief Clerk	Relief Clerk	68232	
Fax	Administration Fax	9616-8240	

G

General Manager's Unit

Michael Woodhouse	General Manager	68102	
Sandra Lombardini	Secretary – General Manager	68102	
Boardroom	Boardroom	68103	
Boardroom	Emergency Powerfail Telephone	68099	
Fax	Administration Fax	9616-8240	

General Practice Unit – Division of Population Health

Dr. Nick Zwar	Director/Professor - GP Unit	68523	
Sanjyot Vagholkar	Staff Specialist	68522	
Barbara Novak	Office Administrator	68524	
Charmaine Rodricks	Secretary	68530	
Teresa Kot	Receptionist	68520	
Dr. Sheila Knowlden	Staff Specialist (Part-Time) Tues/Wed/Fri	68294	
Elizabeth Comino	Researcher	68519	
Fax	General Practice Unit Fax	9616-8400	

General Services

Tulin Ahmet	Corporate Services Manager	68830	
Leanne Campbell	A/General Services Manager	68192	47778
Jan Reid	General Services Supervisor	68117	48130
Steven Tran	Patient Transport Co-ordinator– Hours: 7:30am-5:30pm	68211	47894
Driver - Patient Transport	Patient Transport Driver		47519
Wardsman's Room	Wardsman's Room (Opposite General Services Entry)	68304	
Martin Mazur	Linen Distributor	68227	48121
Nora Moore	Seamstress	68228	
Cleaners/Bed Maker	Cleaners/Bed Maker		47812
Ward Orderlies	Ward 1A and ICU		47790
Ward Orderlies	Radiology		47794
Ward Orderlies	Ward 2A, ED, Cardiac Rehabilitation, Physiotherapy		47644
Ward Orderlies	Ward 2B, 2C, 2D, 1C, SCN, DS, ANC, Theatre between: 21:00-22:00 hrs only and GP Unit		47795
Ward Orderlies	Theatre (Except between 21:00 – 22:00 hrs)		47808
Mortuary	Mortuary	68285	
Fax	Administration Fax	9616-8240	

H

Health Promotion

Jo Alley	Health Promotion Service Manager	9794-1744	0407-233-847
Fax	Fairfield Community Health Centre Fax	9794-1777	

Hypertension Clinic

Lai Hong Siew	Hypertension Specialist Liaison Nurse	9616-8831	0407-233-847
Fax	Ambulatory Care Fax	9616-8305	

Infection Control

Name	Title	Ext. No.	Pager/Mobile
Cora Izon	A/Clinical Nurse Consultant	68290	47521
<i>Fax</i>	<i>Administration Fax</i>	9616-8240	

ISD General Enquiries (Area)

ISD General Enquiries	ISD General Enquiries	9828-5855	
<i>Fax</i>	<i>ISD General Enquiries Fax</i>	9828-5890	

ISD HelpDesk (Area)

ISD HelpDesk	ISD HelpDesk	9828-5888	
<i>Fax</i>	<i>ISD HelpDesk Fax</i>	9828-5865	

Information Technology Services Department - I.T. Services

Susy Spini	I.T. Services Manager	68411	47763
Robert Hutchinson	I.T. Services Co-ordinator	68219	47787
Training Room	I.T. Services Training Room	68216	
COMMS Room – Node A	Communications Room – Node A	68126	
COMMS Room – Node B	Communications Room – Node B	68844	
COMMS Room – Node C	Communications Room – Node C	68016	
PABX Room (Telstra)	PABX Room located outside Administration Area	68273	
<i>Fax</i>	<i>Administration Fax</i>	9616-8240	

Inservice Co-ordinator

Meda Denisenko	Inservice Co-ordinator	68289	47522
<i>Fax</i>	<i>Nursing Administration Fax</i>	9616-8855	

Integrated Clinical Information Project Team (ICIP)

Sandra Farrugia	Sector Implementation Officer	68597	50089
<i>Fax</i>	<i>Administration Fax</i>	9616-8240	

Interpreter Service

Health Care Interpreter Service - Normal Service Hours - Monday – Friday 8:30am-5:00pm			
Interpreter Bookings	Interpreter Service Bookings	9828-6088	47522
After Hours Service	After Hours Service	9616-8111	
Branka Vukojevic	Manager	9828-6801	47522
Ghassan Turki	Business Manager	9828-6811	
Sok-Wee Yew	Administrative Assistant	9828-6802	
Margaret Hales	Clerical Co-ordinator	9828-6803	
Katarzyna Stack	Sessional Co-ordinator	9828-6805	
Translations Co-ordinator	Translations Co-ordinator	9828-6804	
Sylvia Lyneham	Interpreter-In-Charge – Fairfield Base (Not for Bookings!)	68405	47522
Fairfield Based Interpreters	Fairfield Based Interpreters	68235	
		68017	
		68018	
<i>Fax</i>	<i>Interpreter Bookings Fax</i>	9828-6090	

Kiosk

Kiosk	Kiosk	68396	
<i>Fax</i>	<i>Administration Fax</i>	9616-8240	

L

Library

Barbara Gifford	Library Services Manager	68226	
Library Main Desk	Library	68225	
Anna Redestowicz	Library Technician	68226	
<i>Fax</i>	<i>Library Fax</i>	9616-8403	

M

Maintenance

Name	Title	Ext. No.	Pager/Mobile
Charles O'Brien	Physical Resources Manager	68196	47580
Steven Albronda	Maintenance Supervisor	68195	47636
Patty Galatoulas	Maintenance Clerk	68271	
Sharon Manuel	Maintenance Clerk	68271	
Greg Muras	Electrician (Electrical Workshop)	68272	47756
Glen Baker	Electrician	68272	47802
Workshop	Workshop	68198	
Fax	Maintenance Fax	9616-8194	

Mail Clerk

Michele Robertson	Mail Clerk	68121	
-------------------	------------	-------	--

Maternity Services

Danilo Mayor	Maternity Services Manager – Level III	68252	47517
Quiet Room	Quiet Room	68581	
Catherine Niec	Midwifery Educator	68246	47527
Blanka Blesko	A/CNE - Maternity	68834	47789
Pamela Avis	Parenthood Educator	68244	47538
DMP	Domicilliary Midwives Program Office	68248	
DMP-1	Maternity Based		0417-466-549
DMP-2	Maternity Based		0417-467-989
Antenatal Clinic	See ANTENATAL CLINIC		
Delivery Suite	See WARDS – Delivery Suite		
Post Natal Services	See WARDS – Ward 2D		
Special Care Nursery	See WARDS – Special Care Nursery		
Fax	Maternity Fax	9616-8851	

Medical Administration

Dr. Mushtaq Malik	Medical Superintendent	68107	
Robyn Hines	Secretary – Medical Superintendent	68108	
Stella Butt	Administrative Officer – Medical Administration	68734	
Fax	Administration Fax	9616-8240	

Medical Emergency Team Co-ordinator – MET Co-ordinator

Hanh Dinh	Medical Emergency Team Co-ordinator - MET Co-ordinator	68207	47940
Fax	ICU Fax	9616-8553	

Medical Staff

Intern	Medical		47904
Intern	Medical		47817
Intern	Surgical		47529
Intern	Surgical		47760
Intern	Urology and Orthopaedics		47504
Registrar	Anaesthetics CMO		47501
Registrar	Medical		47807
Registrar	Medical		47800
Registrar	Medical		47911
Registrar	Obstetrics & Gynaecology		47811
Registrar	Obstetrics & Gynaecology		47860
Registrar	Obstetrics & Gynaecology		47781
Registrar	Orthopaedics		47758
Registrar	Orthopaedics		47523
Registrar	Surgical		47805
Registrar	Surgical		47910
CMO	Intensive Care Unit		47508
RMO	Intensive Care Unit		47612
RMO	Obstetrics & Gynaecology		47530
RMO	Obstetrics & Gynaecology		47754
RMO	Obstetrics & Gynaecology		47604
RMO	Paediatrics		47537
Fax	Administration Fax	9616-8240	

M

Mental Health

Name	Title	Ext. No.	Pager/Mobile
Susan Kennedy	Mental Health Clinical Nurse Consultant	68846	47579
<i>Fax</i>			

N

Nursing and Support Services

Helen Stewart	A/Director of Nursing and Support Services	68112	
Barbara Chapman	Deputy Director of Nursing and Support Services	68113	47772
Margaret McFadden	Secretary – Director of Nursing	68112	
Elizabeth Metten	Nurse Manager - Staffing	68404	
Transport Nurse	Transport Nurse		47512
<i>Fax</i>	<i>Nursing Administration Fax</i>	9616-8855	

O

Occupational Health and Safety – OH&S

Margo Reid	OH&S Co-ordinator	68348	47892
<i>Fax</i>	<i>Employee Services Fax</i>	9616-8021	

Occupational Therapy

Joanna Burdajewicz	Service Manager – Occupational Therapy	68343	0439-309-002
Angela Vratisistas	Snr. O.T. Acute – Ward 2A/2B and A&E	68548	47856
Snr. Occupational Therapist	Snr. Occupational Therapist – Paediatrics	68346	
Occupational Therapist	Occupational Therapist-ICU / Ward 1A	68735	47554
Occupational Therapist	Pre-Admission - Joints	68548	47764
ACOS O.T.	ACOS Occupational Therapist	68848	
Technical Assistant	Technical Assistant	68401	
Equipment Loan Pool	E.L.P.	68401	0419-287-650
Community O.T.	Community Occupational Therapist: <i>Located at F/Hospital</i>	68435	0407-002-098
<i>Fax</i>	<i>Administration Fax</i>	9616-8240	

P

Pathology

Ray Marsh	Chief Hospital Scientist	68311	
Frank Ho	Senior Hospital Scientist (Blood Bank)	68313	47543
Cynthia Thiatiglio	Scientist Night Shift	68313	47525
Barbara Smith	Receptionist	68309/68310	
Tracey Mamula	Pathology Collector (Separation Room)	68312	24008
Haematology	Haematology	68314	
Roger Lagon	Hospital Scientist (Biochemistry)	68317	47539
<i>Fax</i>	<i>Pathology Fax</i>	9616-8293	

PAS Support

Diana Markovski	PAS Clinical Information Manager	68282	47798
<i>Fax</i>	<i>Business Managers Fax</i>	9616-8856	

Patient Liaison Officer

Joseph Pineda	Patient Liaison Officer	68046	47766
<i>Fax</i>	<i>Administration Fax</i>	9616-8240	

Pharmacy

Nabil Mikhail	Chief Pharmacist	68318/68319	
Pharmacists	Pharmacists	68320	
Pharmacy Assistants	Pharmacy Assistant	68322	
Ward Pharmacy Pager 1	Ward Pharmacy Pager 1		24009
Ward Pharmacy Pager 2	Ward Pharmacy Pager 2		24010
Ward Pharmacy Pager 3	Ward Pharmacy Pager 3		24019
Drug Information Room	Drug Information Room	68323	
After Hours Room	After Hours Room Located: Ward 1A	68213	
<i>Fax</i>	<i>Pharmacy Fax</i>	9616-8528	

P

Physiotherapy

Name	Title	Ext. No.	Pager/Mobile
Lesley Innes	Physiotherapy Service Manager	68325	47542
Receptionist	Receptionist	68324	
	Senior Physiotherapist Orthopaedics	68326	47791
Mark Buhagiar	Senior Physiotherapist Medical /Surgical	68326	24017
Melissa Farrugia	Senior Physiotherapist-Outpatients	68326	
Staffroom	Staffroom	68328	
Shiela Skinner	ACOS Physiotherapist		47815 0418-285-392
Weekend Physiotherapist	Weekend Physiotherapist		24015
Physio/Ward1A / ICU Pager	Physio/Ward1A/ICU Pager		24015
Physio/Orthopaedics Pager	Physio/Orthopaedics Pager		47916
Christina Eagleton	Women's Health Physiotherapist		47915
Fax	Physiotherapy Fax	9616-8537	

Primary Health Nursing Service

Martina Besters	Nurse Unit Manager – Cabra CHC	8717-4000	0417 412 129
Malcolm Stokes	Nurse Unit Manager - Prairiewood CHC	68150	0439 484 503
Pauline Davis	Clinical Nurse Consultant – Palliative Care	68173	0438 672 807
Central Nursing Intake	Central Nursing Intake-Cabramatta CHC	8717-4009	0439 484 503
Fax	Cabramatta PHNs	8717-4030	0438 672 807
Prairiewood PHNs	Prairiewood PHNs	68169	0439 484 503
Fax	Prairiewood PHNs	9616-8171	0438 672 807

Q

Quality Improvement

Natalie Fester	Quality Improvement Co-ordinator – Fairfield Health Service	68118	
Sajma Khan	Administrative Officer - Quality Improvement	68358	
Fax	Administration Fax	9616-8240	

R

Radiology

Debbie Sharpe	Manager – Radiology	68330	47506
Dr. Noelene Turton	Staff Specialist – Radiologist	68736	47569
Dr. Thomas Mathews	Staff Specialist – Radiologist	68331	
Reception	Reception	68329	
Typist Room	Typist Room (Rear Office)	68337	
CT Radiographer	CT Radiographer	68336	
CT Nurses Station	CT Nurses Station	68853	
Staffroom	Staffroom	68338	
Room 1	Room 1	68334	
Radiographer Work Area	Radiographer Work Area	68332	
Radiology After Hours	Radiology After Hours		47784
Fax	Radiology Fax	9616-8852	

S

Security

Trevor Thompson	Fire, Safety and Security Manager	68896	47883
Security Officer	Security Officer		47947
Security	24 Hours x 7 Days	68149	47884 / 47885
Security	Mon-Fri between 18:00-02:30hrs / Sat-Sun between 14:00-06:00hrs	68149	47886
Fax	Administration Fax	9616-8240	

Senior Nurse Manager – C&AH

Eve Bigelow	Senior Nurse Manager – Community & Allied Health	68215	0417-282-627
Fax	Administration Fax	9616-8240	

S

Social Work

Name	Title	Ext. No.	Pager/Mobile
Jolanta Swierczynski	Social Work Service Manager	68287	47544
Cecelia Lincoln	Social Worker	68291	47545
Fabiola Rafael	Social Worker	68700	47796
Michelle Jubelin	Senior Social Worker-Child and Family Team	68347	47546
Nicole Smith	Social Worker-Child and Family Team	68258	47818
Jenny Wilson	Ambulatory Care Social Worker	68557	47901
Student Office	Student Office	68292	
Fax	Social Work Fax	9616-8850	

Speech Pathology

Asta Chow	Speech Pathologist	68357	47549
Fax	Administration Fax	9616-8240	

STARTTS - Service for the Treatment and Rehabilitation of Torture and Trauma Survivors

Main Reception	Main Reception	9794-1900	
Jorge Aroche	Executive Director	9794-1900	
Lachlan Murdoch	Deputy Director	9794-1900	
Allison Russell	Administration Services Co-ordinator	9794-1916	
Fax	S.T.A.R.T.T.S. Fax	9794-1910	

Stores

Christian Fenero	Stores Supervisor	68360	24014
Stores Dock Area	Stores Dock Area	68361	
Stores Office	Stores Office	68362	
Stores Office	Stores Office	68363	
Fax	Stores Fax	9616-8359	

Switchboard

Switchboard Operator	Switchboard Operator	9	
Fax	Administration Fax	9616-8240	

V

Visiting Medical Officers – VMO's

Visiting Medical Officers	Visiting Medical Officers	68025	
Fax	Administration Fax	9616-8240	

Volunteers

Volunteers Office	Volunteers Office	68529	
Fax	Administration Fax	9616-8240	

W

Whitlam Joint Replacement Centre

Leeanne Gray	Nursing Unit Manager – 2B	68393	47582
Justine Naylor	Researcher	68024	
Renata Odzic	Administrative Support	68028	
Maryann Ciccone	Fundraising Co-ordinator	68033	
Fax	Ward 2B – Orthopaedics Fax	9616-8556	

WARDS

Ward 1A – Medical

Name	Title	Ext. No.	Pager No.
Katrina Stott	Nursing Unit Manager – 1A	68383	47583
Cina Thorpe	Ward Clerk	68381	
Peter Dabelstein	Clinical Co-ordinator – Ward 1A	68382	48751
Suzana Stofan	Clinical Nurse Educator – Ward 1A	68382	47928
Staff Station	Staff Station	68382	
Rear Staff Station	Rear Staff Station	68580	
1A Tutorial Room	1A Tutorial Room	68218	
Doctors Room	Doctors Room	68384	
Fax	Ward 1A Fax	9616-8551	

Ward 1C – Paediatrics

Margaret Gluck	Nursing Unit Manager – 1C	68303	47779
	Clinical Nurse Consultant	68398	
Ward Clerk – Ward 1C	Ward Clerk	68302	
1C Tutorial Room	1C Tutorial Room	68308	
Staff Station	Staff Station	68301	
Karitane Telephone Counselling Line-F/Hosp	Karitane Telephone Counselling Line—Fairfield Hospital	68438	
Doctors Lounge	Doctors Lounge	68306	

Ward 2A – Surgical

Kerrie Bailey	Nursing Unit Manager – 2A	68388	47584
Richell Goundar	Ward Clerk	68386	
Staff Station	Staff Station	68387	
Rear Staff Station	Rear Staff Station	68843	
Doctors Room	Doctors Room	68389	
2A Tutorial Room	2A Tutorial Room		
Fax	Ward 2A Fax	9616-8552	

Ward 2B – Surgical Orthopaedics

Leeanne Gray	Nursing Unit Manager – 2B	68393	47582
Dien Nguyen	Ward Clerk	68391	
Maria Trimboli	Ward Clerk	68392	
Nurses Station	Nurses Station	68479	
Doctors Room	Doctors Room	68394	
2B Tutorial Room	2B Tutorial Room	68395	
Fax	Ward 2B Fax	9616-8556	

Ward 2C – Winter Strategy

	Ward 2C – In-Charge	68247	
Staff Station	Staff Station	68250	
Staff Station	Staff Station	68251	
2C Tutorial Room	2C Tutorial Room	68249	

Ward 2D – Maternity

Julie Lovegrove	A/Nursing Unit Manager – 2D	68254	47936
Maternity Reception	Maternity Reception	68241	
Maternity Clerk	Maternity Clerk	68242	
Ima lupeli	Hearing Screener	68484	
Staff Station	Staff Station	68255	
Staff Station	Staff Station	68256	
Fax	Maternity Fax	9616-8851	

Delivery Suite

Karen Sorensen / Cheryl Oytaben	Nursing Unit Manager(s)	68262	47507
Midwife Station	Midwife Station	68260/61	
Doctors Office	Doctors Office	68263	
Doctors Room	Doctors Room	68267	
Fax	Maternity Fax	9616-8851	

Special Care Nursery

Marjatta Salonen	Nursing Unit Manager – Special Care Nursery	68268	47761
Staff Station	Staff Station	68265	
Staff Station	Staff Station	68264	
Fax	Maternity Fax	9616-8851	

Operating Theatre

Stella George	Nursing Unit Manager Level III	68366	47534
Cheryl Swamy	Nursing Unit Manager Level II	68286	48751
Margaret Debien	Ward Clerk	68364/65	
Recovery	Staff Station	68374	
Recovery	Staff Station	68380	
Fax	Maternity Fax	9616-8539	

Intensive Care Unit

Deborah Karam	Nursing Unit Manager – ICU	68542	47770
Hanh Dinh	Medical Emergency Team Co-ordinator – MET Co-ordinator	68207	
Maryann Ciccone	Secretary - Medical	68208	
Vivek Prakash	A/Director ICU/CCU	68206	47508
Marilyn Salter	Ward Clerk	68204	
Staff Station	Staff Station	68203	
Staff Station	Staff Station	68205	
ICU Seminar Room	ICU Seminar Room	68335	
Fax	ICU Fax	9616-8553	

Ward Orderlies – Arrest Pagers

Ward Orderlies	Ward 1A and ICU		47790
Ward Orderlies	Radiology		47794
Ward Orderlies	Ward 2A, ED, Cardiac Rehabilitation, Physiotherapy		47644
Ward Orderlies	Ward 2B, 2C, 2D, 1C, SCN, DS, ANC, Theatre between: 21:00-22:00 hrs only and GP Unit		47795
Ward Orderlies	Theatre (Except between 21:00 – 22:00 hrs)		47808

VOICE MAIL

Accessing the Voicemail System

Fairfield Hospital / Braeside Hospital / PCHC / Corella



Accessing Your Mailbox

1. Dial the voicemail access code: 68555
2. Enter in your security code
****For first time users it is a 4 digit code that is four zeros: 0000**
****Forgotten or existing security codes can be reset back to 000 by I.T. Services**
****A security code re-set will only be actioned following a logged HelpDesk Call**
****To log a call with the ISD HelpDesk – Telephone: 9828-5888**

Changing Your Security Code

1. Dial 68555
2. Enter in your security code
3. **Press 3** to access the Phone Manager
4. **Press 1** to access the Personal Options Menu
5. **Press 4** to change your security code
6. When asked, enter in a new numeric security code followed by the # sign
Security code can be any length, from 4 to 15 digits
7. Listen to the system repeat your new security code. If it is correct **Press 1**.
If it is incorrect **Press 9** and re-enter a new security code.

Recording A Personal Greeting For Your Mailbox

1. Dial 68555
2. Enter in your security code
3. **Press 3** to access the **Phone Manager (NB: Silent Option)**
4. **Press 1** for **Personal Options**
5. **Press 3** to **Record Personal Greeting**
6. **Press 2** to start recording; **Press 2 again** to stop recording
Limit your greeting to 10 -15 seconds
At this point...
7. **Press 6** to review the greeting
Press 4 to discard the greeting and start over
Press * to cancel and exit without saving
When satisfied with the recording, **Press 5** to save it

To Access Your Mailbox From Another Internal Extension:

1. Dial the voicemail access code: (68555)
2. **Press * #** (you will be prompted to enter your mailbox number: *(ie: your extension number)*)
3. You will be prompted to enter security code: *(ie: your 4 digit security code)*
4. You should be able to retrieve your messages now.

To Access Your Mailbox From An External Phone:

1. Dial 9616-8555 (the full number)
2. Enter mailbox number ie: your extension number when prompted
3. Enter security code (you should be able to retrieve your messages now).

Turning Voicemail ON /OFF

Important:

This feature should only be used if your extension has not been set up with automatic voicemail diversion or if you want all your calls to divert to voicemail with no rings.



To Turn Voice Mail ON:

Press * 21 * 68555 #



To Turn Voice Mail OFF:

Press # 21 #

PAGING SYSTEM

Accessing the Paging System

Fairfield Hospital / Braeside Hospital / PCHC / Corella



Dial 77 to access the paging system if paging from an internal telephone:

Dial 77
Enter Pager Number
Press *
Enter Extension Number
Press **
Hang-up

Dial 9616-8577 to access the paging system if paging from an external telephone:

Dial 9616-8577
Enter Pager Number
Press *
Enter Phone Number
Press **
Hang-up

NOTE:

The system will automatically disconnect if the user delays for more than 5 seconds between any of the above steps.

A SUCCESSFUL PAGE will be signalled by a series of “beeps”. The pager you have paged will display your telephone number to call back. Hang up and stay close to your telephone to receive the call back from the person you paged.

AN UNSUCCESSFUL PAGE will be indicated by the absence of a tone or a continuous tone. Should your entry be unsuccessful, hang up and try again.

E-MAIL ADDRESS



IF YOU ARE IN THE SWSAHS GLOBAL ADDRESS LIST, YOUR E-MAIL ADDRESS WILL BE: firstname.surname@swsahs.nsw.gov.au

INTERNET / WEBSITE ADDRESS FOR THE SWSAHS



THE WEBSITE ADDRESS FOR THE SOUTH WESTERN SYDNEY AREA HEALTH SERVICE IS:

<http://www.swsahs.nsw.gov.au>



ANALOGUE TELEPHONE

QUICK REFERENCE GUIDE

Fairfield Hospital / Braeside Hospital / PCHC / Corella Lodge

FUNCTION	ORDER	CANCEL
To Make An Outgoing Call	<ul style="list-style-type: none"> ▪ Lift Handset ▪ Dial "0" ▪ Dial Wanted Number 	
To Hold A Call At Your Own Telephone	<ul style="list-style-type: none"> ▪ Press PBX Button/Recall/Flash ▪ To Return To Caller – Press PBX Button 	
To Make An Enquiry Call	<ul style="list-style-type: none"> ▪ Press PBX to put your Caller on Hold ▪ Dial "0" for Outside Line or Dial Extension required ▪ Make Your Enquiry ▪ To Return to Original Caller Press "2" 	
To Transfer A Call	<ul style="list-style-type: none"> ▪ Press PBX/Recall/Flash Button to Hold Caller ▪ Dial Wanted Extension Number ▪ Wait for Answer and Announce Call ▪ Hang Up ▪ NB: If the extension is busy or doesn't answer, press "2" to return to caller 	
Call Back	<ul style="list-style-type: none"> ▪ Dial Extension then press "3" 	Press #37#
Redial of Last External Telephone Number	<ul style="list-style-type: none"> ▪ Press * * * 	
Group Call Pick Up	<ul style="list-style-type: none"> ▪ Lift Handset ▪ Dial 55 and you will be Connected to the Caller 	
To Answer Another Ringing Extension From Your Own Telephone	<ul style="list-style-type: none"> ▪ Lift Handset ▪ Dial Ringing Extension Number ▪ Wait for Busy Tone ▪ Dial 5 and you will be Connected to the Caller 	
To Use The Conference Facility	<ul style="list-style-type: none"> ▪ Call 1st Person ▪ <u>To Admit More People</u> ▪ Recall [Number] Press 6 to Include or 2 to Release 	
Diversion/Follow Me (To Direct All Calls to Voicemail)	<ul style="list-style-type: none"> ▪ Press *21* Extension you want calls diverted to # ▪ <u>To Direct All Your Calls to VoiceMail with No Rings</u> ▪ Press *21* [68555] # 	Press #21#
Individual Abbreviated Numbers	<ul style="list-style-type: none"> ▪ <u>To Program</u> ▪ Press * 51* Single Digit * Full Number # ▪ <u>To Activate</u> ▪ Press * * Single Digit 	Press # 51 * Single Digit #

Please refer to Call Processing Systems Quick Reference Guide for more detailed information.



DIGITAL TELEPHONE

QUICK REFERENCE GUIDE

Fairfield Hospital / Braeside Hospital / PCHC / Corella Lodge

FUNCTION	ORDER	CANCEL
To Make An Outgoing Call	<ul style="list-style-type: none"> ▪ Lift Handset ▪ Dial "0" ▪ Dial Wanted Number 	
To Hold A Call At Your Own Telephone To Retrieve the Call	<ul style="list-style-type: none"> ▪ Press Access Button that the call came in on (the light will flash slowly) ▪ Press the Same Access button Again 	
To Transfer A Call	<ul style="list-style-type: none"> ▪ Press Inquiry to hold the call. ▪ Dial wanted Extension Number ▪ Wait for Answer and Announce Call ▪ Press Transfer or Access to get caller back from hold position 	
Automatic Call Back	<ul style="list-style-type: none"> ▪ Dial Extension then press "3" or Call Back Button 	Press #37#
Redial of Last Internal Telephone Number	<ul style="list-style-type: none"> ▪ Press * * * 	
Group Call Pick Up	<ul style="list-style-type: none"> ▪ Lift Handset ▪ Dial 55 and you will be Connected to the Caller 	
To Answer Another Ringing Extension From Your Own Telephone	<ul style="list-style-type: none"> ▪ Lift Handset ▪ Dial Ringing Extension Number ▪ Wait for Busy Tone ▪ Dial 5 and you will be Connected to the Caller 	
Direct Diversion	<ul style="list-style-type: none"> ▪ Press Diversion Key. 	Diversion Key
Diversion/Follow Me (To Direct All Calls to Voicemail)	<ul style="list-style-type: none"> ▪ Press * 21 * Extension # ▪ <u>To Direct All Your Calls to VoiceMail with No Rings</u> ▪ Press * 21 [68555] # 	Press #21#
Divert To External Position (Must be Requested)	<ul style="list-style-type: none"> ▪ Press * 22 # External No. #[68555] # ▪ (Remember 0 For Outside Line) 	# 22 #
Individual Abbreviated Numbers	<ul style="list-style-type: none"> ▪ <u>To Program</u> ▪ Press * 51 * Single Digit * Full Number # ▪ <u>To Activate</u> ▪ Press * * Single Digit 	Press # 51 * Single Digit #
To Program Memory Key You can program internal and external numbers that you use often, as single button access numbers on function buttons.	<ul style="list-style-type: none"> ▪ Press Prog - Light is turned ON ▪ Press the selected Memory Key ▪ Dial 0 (for outside line) then required number/or codes. ▪ Press the selected Memory Key - Light is turned OFF ▪ Press Prog Light is turned OFF 	Press Clear instead of a number

Please refer to Call Processing Systems Quick Reference Guide for more detailed information.

HOW TO LOG A HELPDESK CALL









INFORMATION SERVICES DEPARTMENT - ISD

ISD HELPDESK (24Hrs x 7 days) Tel: 9828-5888

ISD HELPDESK FAX No. (During Business Hours): 9828-5865

ISD GENERAL ENQUIRIES (Office Hours): 9828-5855

Please have the following information available to assist in processing your call quickly:

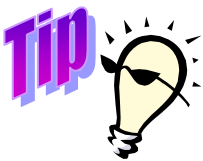
-  Your name, telephone number, location and Department
-  Product name or hardware type (eg: O.R.S. Software)
-  Your PC ComputerName (if applicable)
-  A priority number from the priority numbers below
-  A brief explanation of your problem
-  **Write down the log number that you are given**

Call Priority

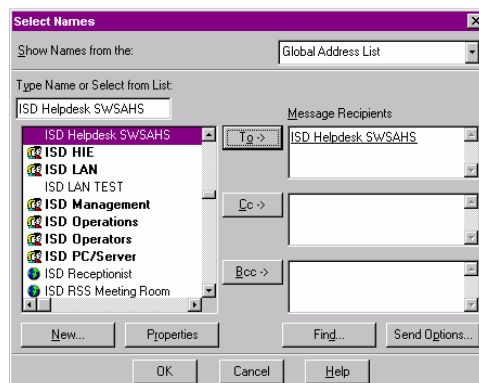
- | | |
|------------------------------------|---|
| Priority 1: Critical Impact | - Cannot continue without immediate attention |
| Priority 2: Limited Impact | - System functioning, but limited operation |
| Priority 3: Minimal Impact | - Marginal effect on operation |
| Priority 4: Advisory | - Enquiry Only |



**To follow-up a Logged HELPDESK Call –
Phone the HELPDESK and quote your log number.**



An alternative to ringing the ISD HelpDesk is to log your call via e-mail:



Simply select:

ISD Service Desk SWSAHS

from the Global Address List from within Microsoft Outlook.

Type in your problem as a message and send the e-mail. Your call will be logged by an ISD HelpDesk Operator.



Fairfield Health Service

EXECUTIVE AND SERVICE MANAGERS BY DIVISION

Title	Name	Telephone	Pager	Mobile
GENERAL MANAGERS UNIT				
General Manager	Michael Woodhouse	9616-8102		
Quality Improvement Co-ordinator	Natalie Fester	9616-8118		
Community Participation Co-ordinator	Carmen Putica	9616-8116		0438-886-049
FINANCE AND ADMINISTRATION				
Director of Finance and Administration	Raymond Lal	9616-8109		
I.T. Services Manager	Susy Spini	9616-8411	47763	
Physical Resources Manager	Charles O'Brien	9616-8196	47580	
Finance/Revenue Manager	Donna Perera	9616-8124		
Corporate Services Manager	Tulin Ahmet	9616-8830		
PASS Support Officer	Rachael Jamieson	9616-8733	47798	
NURSING & SUPPORT SERVICES				
A/Director of Nursing & Support Services	Helen Stewart	9616-8112		
Deputy Director of Nursing & Support Services	Barbara Chapman	9616-8113	47772	
Nurse Manager - Staffing	Elizabeth Metten	9616-8404	47772	
Patient Flow Manager	Rosemary McIndoe	9616-8127	47797	
After Hours Nurse Managers	After Hours Nurse Managers	9616-8404	47772	
Antenatal Clinic Nurse Unit Manager	Terri Bell	9616-8515		
Cardiac Rehabilitation - CNC	Robyn Speerin	9616-8344	47559	
Pre-Admission Clinic NUM	Chris Williams	9616-8127	47700	
Diabetes Educator - CNC	Nicole Matthews	9616-8532	47510	
Infection Control – A/CNC	Cora Izon	9616-8290	47521	
Inservice Co-ordinator	Meda Denisenko	9616-8289	47522	
Delivery Suite – Nursing Unit Manager(s)	Karen Sorensen/Cheryl Oytaben	9616-8263	47507	
Emergency Department–A/Nursing Unit Mgr	Belinda Pellizon	9616-8148	47692	
A/Food Services Manager	Joan Keith	9616-8155	47558	
A/General Services Manager	Leanne Campbell	9616-8192	47778	
ICU/CCU Nursing Unit Manager	Deborah Karam	9616-8207	47770	
Peri-operative Nurse Manager		9616-8247	47700	
Operating Theatre – Nursing Unit Manager III	Stella George	9616-8366	47534	
Operating Theatre – Nursing Unit Manager I	Angela Ang	9616-8286	48751	
Special Care Nursery – Nursing Unit Manager	Marjatta Salonen	9616-8268	47761	
Ward 1A – A/Nursing Unit Manager	Katrina Stott	9616-8383	47583	
Ward 1C – Nursing Unit Manager	Margaret Gluck	9616-8303	47779	
Ward 2A – Nursing Unit Manager	Kerrie Bailey	9616-8388	47584	
Ward 2B – Nursing Unit Manager	Leeanne Gray	9616-8393	47582	
Ward 2C – Nursing Unit Manager		9616-8247		
Ward 2D – Nursing Unit Manager	Rowena Pierce	9616-8254	24024	
Maternity Services – NUM Level III	Danilo Mayor	9616-8252	47517	
Warehouse/Stores Supervisor	Christian Fenero	9616-8360	24014	
MEDICAL				
Medical Superintendent	Dr. Mushtak Malik	9616-8107		
Staff Radiologist	Dr. Noelene Turton	9616-8331	47569	
Chief Pharmacist	Nabil Mikhail	9616-8318/19	47505	
Chief Radiographer	Debbie Sharpe	9616-8330	47506	
Clinical Information Manager	Daniela Markovski	9616-8277		
Deputy Clinical Information Manager		9616-8413		
Community Paediatrician	Dr. Carolyn Cooper	9616-8257	47776	
Dental Services Manager	Vivienne Magro	9616-8006		0439-662-683
Dentist-in-Charge	Dr. Sadhna Kumar	9616-8229		
A/Director ICU/CCU	Dr. Vivek Prakash	9616-8206	47508	
Emergency Department – Director		9616-8133	47540	
Emergency Department – Director		9616-8134	47801	
Library Services Manager	Barbara Gifford	9616-8226		
GENERAL PRACTICE UNIT - AREA				
Director of General Practice Unit	Dr. Nick Zwar	9616-8523		




Fairfield Health Service

COMMUNITY AND ALLIED HEALTH SERVICE MANAGERS AND CENTRE ADMINISTRATORS

Title	Name	Telephone	Pager	Mobile
ADMINISTRATIVE SERVICES - C&AH				
Director of Community & Allied Health	Dianna Kenrick	9616-8105		0417-299-744
Assistant Director of C&AH	Troy Trgetaric	9616-8215		0419-492-318
Employee Services Manager	Liz Bail	9616-8120		
Senior Nurse Manager	Eve Bigelow	9616 8215		0417-282-627
Community Clinical Information Manager	Diana Markovski	9616-8282		
AGED CARE SERVICES				
Aged Care Services Nurse Unit Manager		9794-1787		0418-261-187
AMBULATORY CARE				
Ambulatory Care Service Manager	Lyn Cohen	9616-8829		0438-675-851
Medical Director – Ambulatory Care	Tai-Tak Wan	9616-8341		
CABRAMATTA PHN's				
Carramar Nursing Services NUM	Malcolm Stokes/Martina Besters	8717-4013		
CENTRE ADMINISTRATORS				
Centre Administrator – CCHC	Juliana Atanasovski	8717-4000		
Centre Administrator – FCHC	Matthew Smith	9794-1741		
Centre Administrator – PCHC	Davy Chea	9616-8169		
CHILDCARE CENTRE				
Childcare Centre Director	Carmen Putica	9616-8545		
DIETETICS AND NUTRITION SERVICES				
Nutrition and Dietetics Service Manager	Sami Azad	9616-8355	47513	0419-469-196
EARLY CHILDHOOD AND PARENTING SERVICE – ECAPS				
ECAPS Service Manager	Lien Bui	9794-1762		0419-289-527
DRUG HEALTH SERVICES				
A/Manager - Fairfield Drug Services	Claire Honey	9616-8841		0407-911-224
Medical Director of Fairfield Drug Services	Dr. Peter McCaul	9616-8816		0409-445-154
Corella Nursing Unit Manager	Lucinda Scopelliti	9616-8810	47792	0407-946-635
Manager, Pathways	Claire Honey	9616-8859		0439-813-596
A/Manager, Cabramatta Drug Health Service	Carla Calvete	9724-9922		0409-398346
FAIRFIELD COMMUNITY COUNSELLING SERVICE				
Fairfield Community Counselling Service Mgr	Gladiss Warda	9794-1742		0418-472-830
FAIRFIELD LIVERPOOL YOUTH HEALTH TEAM - FLYHT				
FLYHT Services Manager	Maria Coelho	8717-1718		0418-204-116
HEALTH PROMOTION				
Health Promotion Service Manager	Jo Alley	9794-1744		0407-233-847
MULTICULTURAL HEALTH				
A/Multicultural Health Service Manager	Balwinder Sidhu	8717-4038		0418-200-198
OCCUPATIONAL THERAPY				
Occupational Therapy Service Manager	Joanna Burdajewicz	9616-8343	48004	
PHYSIOTHERAPY				
Physiotherapy Service Manager	Lesley Innes	9616-8325	47542	
PRAIRIEWOOD PHYSICAL DISABILITIES TEAM				
PPDT Services Manager	Joanna Burdajewicz	9616-8343	48004	
PRAIRIEWOOD PHN's				
Wetherill Park Nursing Services NUM	Malcolm Stokes/Martina Besters	9616-8150		0439 484 503
SPEECH PATHOLOGY				
A/Speech Pathology Services Manager	Rita Basso	9794-1716		
SOCIAL WORK				
Social Work Service Manager	Jolanta Swierczynski	9616-8287	47544	

COMMUNITY HEALTH AND DRUG HEALTH SERVICES

◆ AMBULATORY CARE		◆ AGED CARE SERVICES	
Cnr Polding Street and Prairievale Road PRAIRIEWOOD NSW 2176 TEL: <u>9616-8340</u> Fax: 9616-8305		56 Campbell Street FAIRFIELD NSW 2165 TEL: <u>9725-6754</u> Fax: 9725-6734	
◆ CABRAMATTA COMMUNITY HEALTH CENTRE		◆ PRAIRIEWOOD PHYSICAL DISABILITY TEAM	
7 Levuka Street CABRAMATTA NSW 2166 TEL: <u>8717-4000</u> Fax: 8717-4030		Fairfield Hospital Cnr Polding Street & Prairievale Road PRAIRIEWOOD NSW 2176 TEL: <u>9616-8032</u> Fax: 9616-8033	
◆ EARLY CHILDHOOD AND PARENTING SERVICES - E.C.A.P.S.			
53 - 65 Mitchell Street Cnr The Horsley Drive CARRAMAR NSW 2163 TEL: <u>9794-1760</u> Fax: 9794-1755		Postal Address: PO BOX 623 FAIRFIELD NSW 2165 	
◆ FAIRFIELD COMMUNITY HEALTH CENTRE - FCHC			
53 - 65 Mitchell Street Cnr The Horsley Drive CARRAMAR NSW 2163 TEL: <u>9794-1700</u> Fax: 9794-1777		Postal Address: PO Box 390 FAIRFIELD NSW 2165	
◆ FAIRFIELD LIVERPOOL YOUTH HEALTH TEAM – F.L.Y.H.T.			
53 - 65 Mitchell Street Cnr The Horsley Drive CARRAMAR NSW 2163 TEL: <u>8717-1717</u> Fax: 8717-1710		Postal Address: PO Box 390 FAIRFIELD NSW 2165	
◆ PRAIRIEWOOD COMMUNITY HEALTH CENTRE			
Cnr Polding St. & Prairievale Rd PRAIRIEWOOD NSW 2176 TEL: <u>9616-8169 or 9616-8170</u> Fax: 9616-8171		Postal Address: PO Box 608 FAIRFIELD NSW 1860	
◆ DRUG HEALTH SERVICES - CORELLA		◆ PATHWAYS	
Prairievale Road (Opposite Restwell Street) PRAIRIEWOOD NSW 2176 TEL: <u>9616-8800 or 9616-8801</u> Fax: 9616-8803		Prairievale Road (Opposite Restwell Street) PRAIRIEWOOD NSW 2176 TEL: <u>9616-8888</u> Fax Block 1: 9616-8880 (Reception) Fax Block 2: 9616-8870	
◆ HARM REDUCTION PROGRAM			
57 Anthony Street FAIRFIELD NSW 2165 TEL: <u>9724-9922</u> Fax: 9725-6782		Postal Address: PO Box 608 FAIRFIELD NSW 1860	

SOUTH WESTERN SYDNEY AREA HEALTH SERVICE



HOSPITALS

HOSPITAL	TEL No.	FAX No.
BANKSTOWN HOSPITAL Eldridge Road BANKSTOWN NSW 2200	9722-8000	9722-8570
BOWRAL HOSPITAL Mona Road BOWRAL NSW 2576	4861-0200	4861-4511
BRAESIDE HOSPITAL Prairievale Road PRAIRIEWOOD NSW 2176	9616-8600	9616-8657
CAMDEN HOSPITAL Menangle Road CAMDEN NSW 2570	4634-3000	4629-1016
CAMPBELLTOWN HOSPITAL Therry Road CAMPBELLTOWN NSW 2560	4634-3000	4634-3880
CARRINGTON CENTENNIAL HOSPITAL Werombi Road CAMDEN NSW 2570	4655-2100	4655-1984
FAIRFIELD HOSPITAL Cnr Polding Street & Prairievale Road PRAIRIEWOOD NSW 2176	9616-8111	9616-8240
KARITANE Cnr Mitchell Street & The Horsley Drive CARRAMAR NSW 2163	9794-1800	9794-1858
LIVERPOOL HOSPITAL Elizabeth Street LIVERPOOL NSW 2170	9828-3000	9828-6318
QUEEN VICTORIA MEMORIAL HOME Thirlmere Way PICTON NSW 2571	4683-6900	4683-6910

SOUTH WESTERN SYDNEY AREA HEALTH SERVICE



COMMUNITY HEALTH CENTRES

COMMUNITY HEALTH CENTRE	TEL No.	FAX No.
Bankstown Community Health Centre 36-38 Raymond Street BANKSTOWN NSW 2200	9780-2730	9780-2899
Bowral Community Health Centre Bendooley Street BOWRAL NSW 2576	4861-8000	4861-4956
Liverpool Community Health Centre Health Services Building Cnr Campbell & Goulburn Streets LIVERPOOL NSW 2170	9828-4844	9828-4800
Hoxton Park Community Health Centre 596 Hoxton Park Road HOXTON PARK NSW 2171	9827-2222	9827-2200
Miller Community Centre Woodward Crescent MILLER NSW 2168	9607-8112	9607-5250
Moorebank Community Health Centre 29 Stockton Avenue MOOREBANK NSW 2170	9602-6419	9601-1147
Campbelltown Community Health Centre Cnr Moore and Cordeaux Streets CAMPBELLTOWN NSW 2560	4629-2111	4629-2150
Ingleburn Community Health Centre 57-59 Cumberland Road INGLEBURN NSW 2565	9605-8900	9618-2219
Narellan Community Health Centre 14 Queen Street NARELLAN NSW 2567	4640-3500	4640-3513
Rosemeadow Community Health Centre 5 Thomas Rose Drive ROSEMEADOW NSW 2560	4633-4100	4633-4111
Wollondilly Health Centre 5-9 Harper Close TAHMOOR NSW 2573	4683-6000	4683-6032

SOUTH WESTERN SYDNEY AREA HEALTH SERVICE



AREA SERVICES – EASTERN CAMPUS - LIVERPOOL

AREA SERVICE	TEL No.	FAX No.
<i>Chief Executive Officer</i>	9828-5701	9828-5704
<i>Director of Operations</i>	9828-5770	9828-5769
<i>Area HR Development Service</i>	9828-5920	9828-5931
<i>Business Services</i>	9828-5762	9828-5914
<i>Commercial Services</i>	9828-6060	9828-6066
<i>Division of Planning</i>	9828-5755	9828-5795
<i>Finance</i>	9828-5716	9828-5725
<i>Human Resources</i>	9828-5929	9828-5745
<i>Information Services Department (I.S.D.)</i>	HelpDesk: 9828-5888 Enquiries: 9828-8855	HelpDesk: 9828-5865 General: 9828-5890
<i>Internal Audit</i>	9828-5709	9828-5769
<i>Medical and Clinical Services</i>	9828-5763	9828-5914
<i>Nursing and Clinical Services</i>	9828-5764	9828-5914
<i>Pay Office</i> <i>Workforce/Kronos</i> <i>Security Manager: Christine MacDonald</i>	General Enquiries: 9828-5739 Workforce/Kronos: 9828-5800	9828-5751
<i>Physical Resources</i>	9828-5966	9828-5970
<i>South Western Area Pathology Services (S.W.A.P.S.)</i>	9828-5001	9828-5015

South Western Sydney Area Health Service

AREA PURCHASING SERVICE / LOGISTICS CENTRE

General Enquiries:

Telephone: 9757-8000

Note:

For product information on sourcing products, please contact the specific Purchasing Group with the "Inquiry" responsibility quoted below:

Address:

13 Hargraves Place
WETHERILL PARK NSW 2164

Mailing Address:

PO Box 7060
WETHERILL PARK NSW 2164

Hours of Business:

Area Purchasing Service: 8:00am – 5:00pm
Logistics Centre: 07:30am – 04:30pm

Emergency After Hours:

Logistics Centre: 0439-301-478 [Adam Doyle]
0408-467-823 [Mark Kennedy]
0418-280-387 [Michael Jess]

NAME	TITLE	TELEPHONE	MOBILE
Michael Jess	Area Procurement and Logistics Manager	9757-8025	0418-280-387
Mark Kennedy	Operations Manager – Purchasing and Logistics	9757-8001	0408-467-823
Margaret Sullivan	Area Clinical Product Advisor	9757-8005	0407-661-528
Sue Derks	Cataloguer and "Oracle" Systems Administrator	9757-8002	
Fax 1	Area Purchasing Fax 1	9756-5112	
Fax 2	Area Purchasing Fax 2	9756-0507	
Fax – Logistics	Logistics Fax	9757-8067	

CONTRACTS GROUP

Purchasing Responsibility

Group responsible for establishing local period contracts for items not covered under existing State Contracts and updating the ORACLE database of Local and State Contract items / services recommended for use across the Area.

Alex Reid (Group Manager) 9757 8003
Senior Contracts Officer

Peter Williams 9757-8004
Contracts Officer

ACCOUNTS PAYABLE GROUP

Purchasing Responsibility

Group responsible for all accounting processes.
For assigned vendors.

Vendor Groups

Rita Narayan 9757 8009 All vendors starting with A,C,D,F,H. (Excludes Corporate Express).
Creditors Clerk

Renu Kumar 9757 8010 All vendors starting with G,I,J,K,L,M,N,O, P,U and 3M.
Creditors Clerk

Abhashini Kumar 9757 8011 All vendors starting with B and Corporate Express.
Creditors Clerk

Melina Romolo 9757 8016 All vendors starting with E,O,R,S,T,U,V,W,X,Y,Z.
Creditors Clerk

PURCHASING GROUP 1

Enquiries Responsibility

Group responsible for obtaining product information and quotes prior to purchase for the following items:

Purchasing Responsibility

Buyers responsibility to purchase all products for assigned vendors

David Watkins 9757 8006
(Group Manager)

Phillip Tan 9757 8014

Judith Lendon 9757 8022

Vacant 9757-8008

Products and Vendor Groups

Medical consumables including medical instruments & appliances, diagnostic and monitoring consumables, implants, wound care bandages & dressings, drainage, continence management, barrier hygiene, dialysis & enteral nutrition.

All vendors starting with Cook, I, G,T (excludes Tyco), U,V & Z
Excludes Forms and SWAPS

All vendors starting with D,N,O, & Q. including Smith and Nephew.
Excludes Forms and Qantas.

All SWAPS requirements. Excludes Forms.

PURCHASING GROUP 2

Enquiries Responsibility

Group responsible for obtaining product information and quotes prior to purchase for the following items:

Purchasing Responsibility

Buyers responsibility to purchase all products for assigned vendors

Fay Yiannakopolous 9757 8020
(Group Manager)

Rod May 9757 8021

Stephen Sutcliffe 9757 8023

Products and Vendor Groups

Equipment electromedical & medical.
Equipment electrical including whitegoods, televisions, videos, office machines etc, furniture, fittings & furnishings including chairs, desks, filing cabinets etc.

All vendors starting with Baxter Healthcare, C (excluding Cello Paper, Clifford Hallan, Coloplast, Cook, Corporate Express, Convatec, X. Excludes Forms and SWAPS.

All vendors starting with B (excluding Baxter Healthcare), Cello Paper, Clifford Hallan, E. Excludes Forms and SWAPS.

All vendors starting with A, Coloplast, F, P, R W & Y.
Excludes Forms and SWAPS.

PURCHASING GROUP 3

Enquiries Responsibility

Group responsible for obtaining product information and quotes prior to purchase for the following items:

Purchasing Responsibility

Buyers responsibility to purchase all products for assigned vendors

Graeme Allery 9757 8012
(Group Manager)

Corrie Mendigoram 9757 8013

Sue Taylor 9757 8019

Products and Vendor Groups

Radiology & dental requisites, occupational therapy and aids for disabled, cleaning and toiletry, kitchen and tableware, laundry materials, bedding, uniforms, footwear, protective clothing, stationery and office requisites, books magazines.

All vendors starting with J,K,L.
Excludes Forms and SWAPS.

All vendors starting with H and M (including 3M).
Excludes Forms and SWAPS.

All vendors starting with Convatec, Corporate Express, S (excludes all Smith and Nephew, Tyco, Unomedical. Excludes forms and SWAPS.

PURCHASING GROUP 4 (PHARMACEUTICAL'S)

Enquiries Responsibility

Group responsible for obtaining product information and quotes prior to purchase for the following items:

Purchasing Responsibility

Buyers responsibility to purchase all products for assigned Hospitals:

Deb Endean 9757 8017
A/Group Manager

Jorge Beery 9757 8018

Colleen O'Keefe 9757 8015

Swastika Singh 9757 8026

Pharmaceutical products for the Area Pharmacy's / Wards

Client Groups

All Pharmacy requirements for Liverpool Hospital

All Pharmacy requirements for Bankstown, Fairfield and Bowal Hospitals

All Pharmacy requirements for Campbelltown and Camden Hospital, plus Community Health Fairfield. Excludes Forms.

Responsible for all accounting processes for Pharmacy purchases.

AREA PURCHASING SERVICE / LOGISTICS CENTRE - Continued ... /

FORMS

Purchasing Responsibility

*Responsible for all forms for all sites.
Controlled by the Area Purchasing Service.*

Patricia Gadd 9757 8007 All Forms plus QANTAS orders.

LOGISTICS CENTRE

Responsibility

Responsible for storage and distribution of stocked products to Liverpool, Bankstown and Fairfield Hospitals.

NAME	TITLE	TELEPHONE	MOBILE
Adam Doyle	Warehouse and Distributions Manager	9757-8068	0439-301-478 (After Hours)
Robert Guest	Receiving and Dispatch	9757-8070	
Colin Ambosta	Customer Picking	9757-8069	
Bill Ruttley / Brian Saxby	Clean Room	9757-8065	
Brendan Cummins	Storeman		
Fred Creswell	Storeman		
Glen Castle	Storeman		
Helmut Zuzul	Storeman		
James Nguyen	Storeman		
Lalit Chand	Storeman		
Neil Miller	Storeman		
Peter Dekker			
Sam Chuon			

Other Telephone Numbers

Name:

Name:

Name:

Name:

Name:

Name:

Name:

Name:

Name:

Name:

Name:

Name:

Name:

Name:



POWERFAIL TELEPHONES

Fairfield Hospital

Power Fail Telephones are “RED” in colour and are the ONLY telephones that will operate during COMPLETE Power and Generator Failure.

In the event of COMPLETE power and generator failure you CANNOT use “666” for Emergency Purposes.

You Must contact the Switchboard on it's allocated PowerFail Number:

Between the Hours of 7am and 9pm: PowerFail No: 9725-1092

After Hours:-9pm to 7am: PowerFail No: 9725-1838

The following extensions have been allocated corresponding PowerFail Numbers.

The Allocated PowerFail numbers will only operate under complete power and generator failure!!!

Department	Location	Extension	Allocated PowerFail Number
Administration	Mail Clerk's Desk	68121	9725-1747
Boardroom	Emergency Phone (Front)	68099	9725-1696
Childcare	Childcare Staffroom	68166	9725-1452
Delivery Suite	Midwife Station	68260	9725-1761
Dental	Dentist-in-Charge Office	68186	9725-1404
Emergency	Observation Ward Desk	68140	9725-1192
Emergency	Clerical Station-A/H Switch	68132	9725-1838
Emergency	Staff Station	68141	9725-1607
Food Services	Food Services Supervisor	68151	9725-1382
Front Office Enquires	Front Office Enquiries	68234	9725-1042
General Services	General Services Supervisor	68117	9725-1496
ICU	Ward Clerk	68204	9725-1257
Maintenance	Maintenance Supervisor	68195	9725-2785
Nursing Admin.	Nurse Manager's Office	68595	9725-2059
Operating Suite	Recovery Staff Station	68374	9725-2994
Operating Suite	Ward Clerk	68364	9725-1852
Radiology	Reception Desk-(Rear Office)	68337	9725-1508
Special Care Nursery	Nurses Desk	68265	9725-1218
Switchboard	Back Desk	68230	9725-1092
Ward 1A Staff Station	Ward Clerk	68381	9725-1593
Ward 2A	Ward Clerk	68386	9725-2128
Ward 2B	Surgical Orthopaedics	68391	9725-1916
Ward 2D	Nurses Station	68255	9725-1980
Ward IC Paediatrics	Ward Clerk	68302	9725-2459

Note: You will be unable to “page” when the telephone is in powerfail mode

In the event of Total Power Failure

Switchboard Operator to Call Macquarie Faults on 1800-789-999 (24 Hour Service)



POWERFAIL TELEPHONES

Braeside Hospital

And

Corella Drug Treatment Services



Power Fail Telephones that are labelled in red are the ONLY telephones that will operate

during COMPLETE Power and Battery Backup Failure.

In the event of COMPLETE power and battery backup failure you CANNOT use "666" for Emergency Purposes.

YOU MUST contact 9609-5274.

The following extensions have been allocated corresponding PowerFail Numbers.

The Allocated PowerFail numbers will only operate under complete power and Battery Backup failure!!!

Braeside Hospital

Department	Location	Extension	Allocated PowerFail Number
A Wing	Large Group Room	68604	9609-5235
Administration	Transport Co-ordinator	68648	9725-2882
Aged Care Psychiatry	Patients Lounge 9-16	68697	9725-2305
Palliative Care	OHS Room	68709	9609-5431
Palliative Care WardB	Kitchen Day Hospital	68670	9609-5274
Rehabilitation WardA	Clinic Room Ward A	68534	9609-5397

Corella Drug Treatment Services

Department	Location	Extension	Allocated PowerFail Number
Corella	Nurses Station	68840	9725-2639

Note: You will be unable to "page" when the telephone is in powerfail mode

In the event of Total Power Failure

Switchboard Operator to Call Macquarie Faults on 1800-789-999 (24 Hour Service)